

Professional Space in NE Bismarck

2718 Gateway Ave. - Bismarck, ND

Suites 102, 103 & 104, and 303



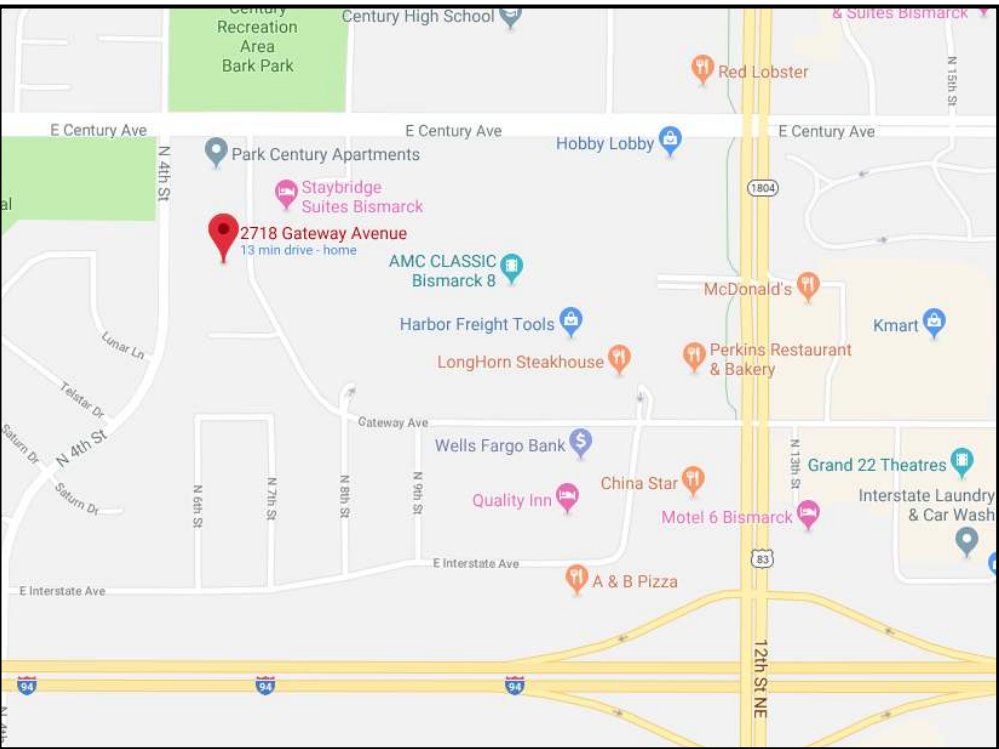
Kyle Holwagner, CCIM, SIOR
701.400.5373
Kyle@DanielCompanies.com

Kristyn Steckler, Senior Client Coordinator
701.527.0138
Kristyn@DanielCompanies.com

DanielCompanies.com

Executive Summary for Lease	
Address:	2718 Gateway Ave - Bismarck, ND
Lease Term:	Minimum 1 Year
Lease Rate:	\$11.50 psf - Full Service
Lease Incentive:	One month free rent for each year of signed lease.
Approximate SF:	Suite 102 - 1,200 sf Suite 103 / 104 - 2,100 sf Suite 303 - 1,200 sf
Parking:	Off Street
Tenant Responsibilities:	Liability Insurance
Landlord Responsibilities:	Janitorial, Building Maintenance, Snow Removal
Broker does not guarantee the information describing this property. Interested parties are advised to independently verify the information through personal inspectors or with appropriate professionals.	

Property Highlights	
Landlord will provide new paint and carpet	
Suites 103 & 104 can be subdivided	
Full Service includes interior janitorial	



1 MILE	3 MILE	5 MILE
12,480	62,364	91,162

1 MILE	3 MILE	5 MILE
\$73,484	\$77,646	\$82,110

1 MILE	3 MILE	5 MILE
41.4	38.4	37.5



Kyle Holwagner, CCIM, SIOR
701.400.5373
Kyle@DanielCompanies.com

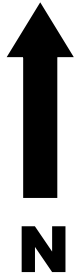
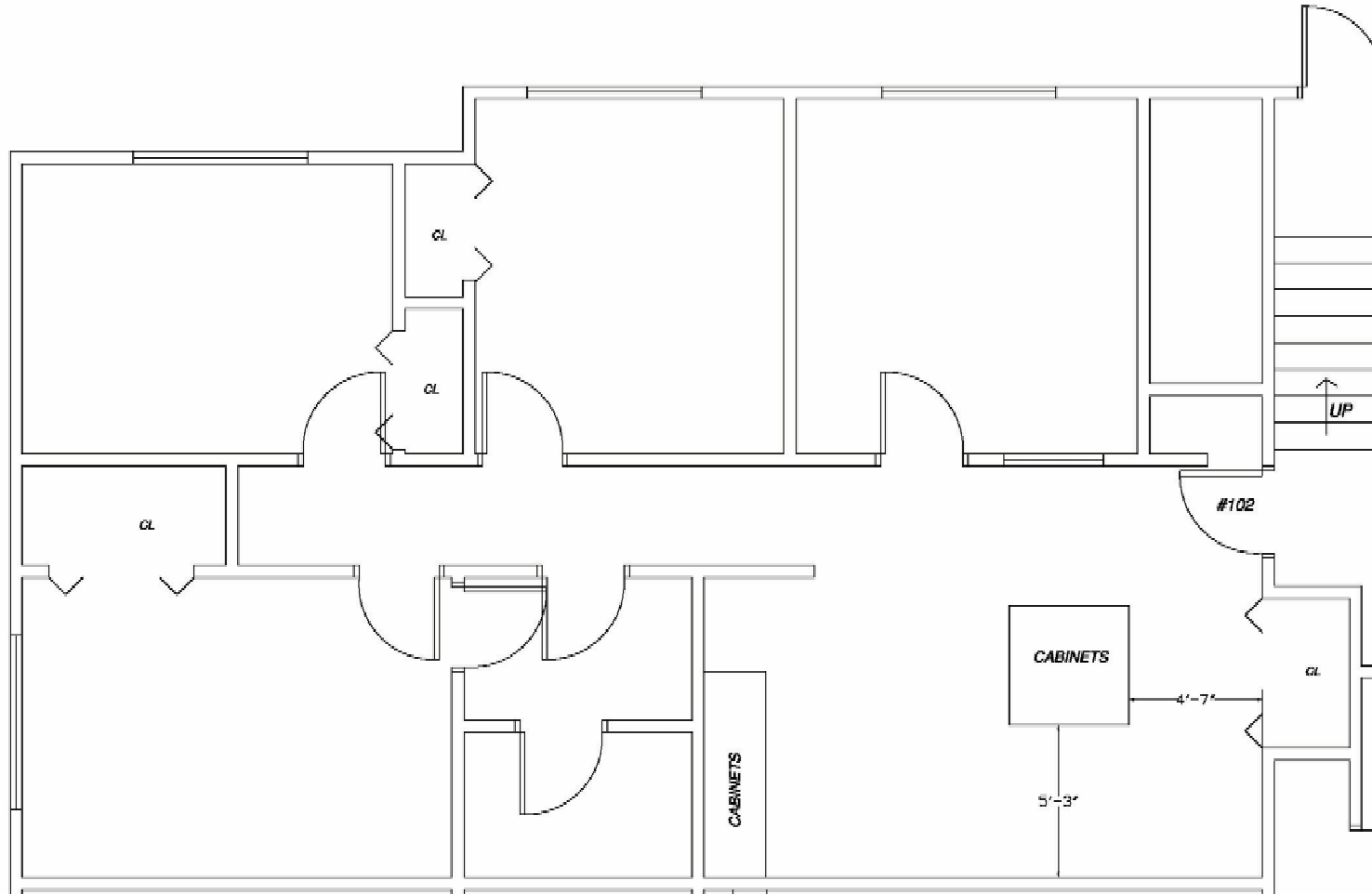
Kristyn Steckler, Senior Client Coordinator
701.527.0138
Kristyn@DanielCompanies.com

Kristyn Steckler, Senior Client Coordinator
701.527.0138
Kristyn@DanielCompanies.com

DanielCompanies.com

Suite 102 Floor Plan

**** For visual purposes only, actual floor plan and sizes may vary.****



Kyle Holwagner, CCIM, SIOR
701.400.5373
Kyle@DanielCompanies.com

Kristyn Steckler, Senior Client Coordinator
701.527.0138
Kristyn@DanielCompanies.com

DanielCompanies.com

Suite 103 & 104 Floor Plan - May be subdivided

**** For visual purposes only, actual floor plan and sizes may vary.****



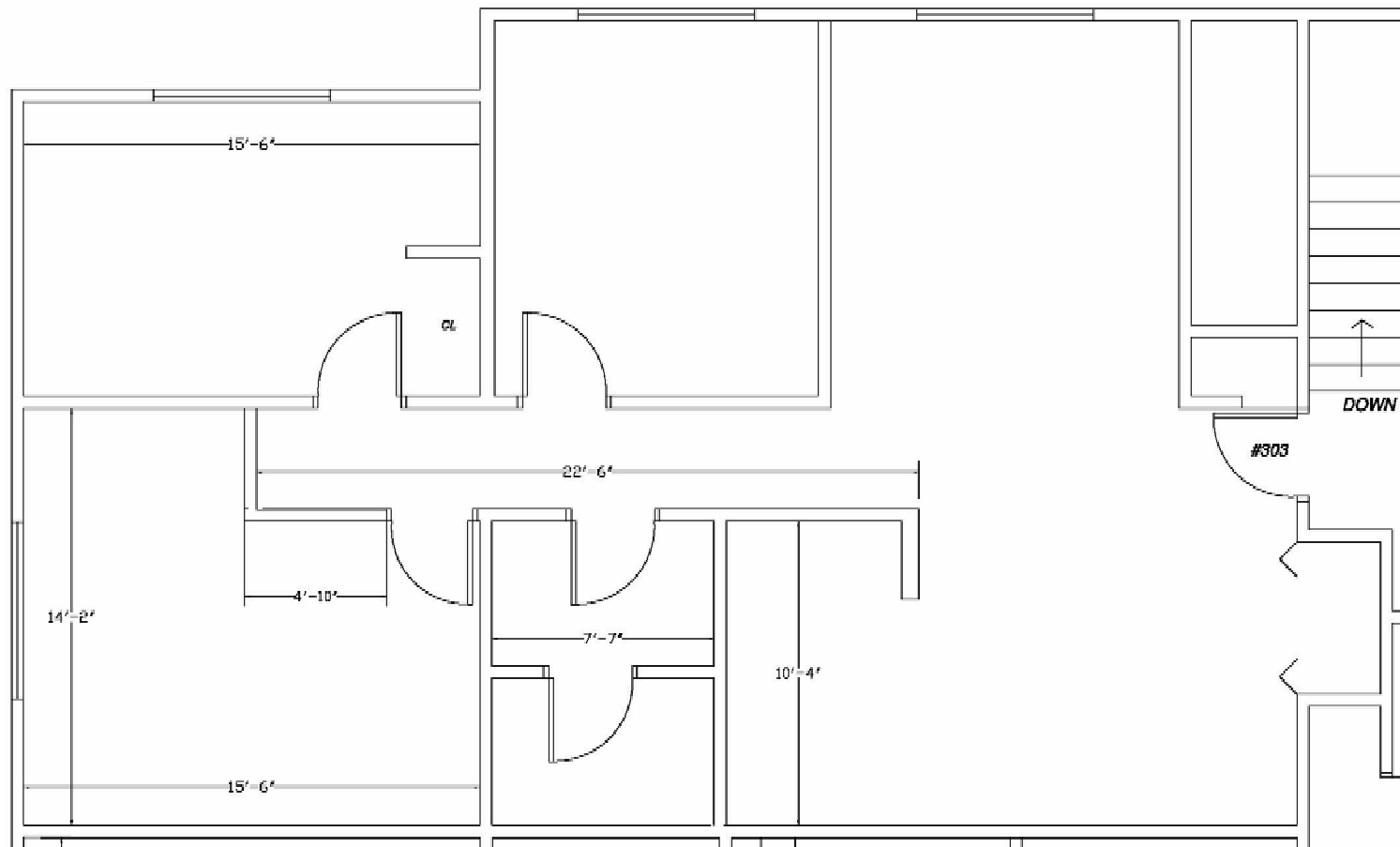
Kyle Holwagner, CCIM, SIOR
701.400.5373
Kyle@DanielCompanies.com

Kristyn Steckler, Senior Client Coordinator
701.527.0138
Kristyn@DanielCompanies.com

DanielCompanies.com

Suite 303 Floor Plan

** For visual purposes only, actual floor plan and sizes may vary.**



Kyle Holwagner, CCIM, SIOR
701.400.5373
Kyle@DanielCompanies.com

Kristyn Steckler, Senior Client Coordinator
701.527.0138
Kristyn@DanielCompanies.com

DanielCompanies.com





DANIEL COMPANIES

The Leader in Commercial Real Estate



Bill Daniel
CCIM, Broker

701.220.2455
Bill@DanielCompanies.com



Kyle Holwagner
CCIM, SIOR

701.400.5373
Kyle@DanielCompanies.com



Taylor Daniel
Commercial REALTOR®

701.391.4262
Taylor@DanielCompanies.com

Serving commercial real estate clients with unmatched market knowledge, experience and a well-deserved reputation for integrity.
They know the Bismarck-Mandan commercial real estate market better than anyone.

Powerful Team. Powerful Process. Powerful Results.