

# Grand Pacific Center

400 E Broadway Ave Suite 50 - Bismarck, ND

3,385 sf / \$3,667 mo.



**Taylor Daniel, Commercial REALTOR®**  
701.391.4262  
[Taylor@DanielCompanies.com](mailto:Taylor@DanielCompanies.com)

**Bill Daniel, CCIM, Broker**  
701.220.2455  
[Bill@DanielCompanies.com](mailto:Bill@DanielCompanies.com)

[DanielCompanies.com](http://DanielCompanies.com)

## Executive Summary for Lease

Address:	400 E Broadway Ave Ste. 50 - Bismarck, ND
Property Name:	Grand Pacific Center
Date Available:	Available Now
Lease Term:	Minimum 3 Years
Approximate SF:	3,385 sf
Tenant Responsibilities	Parking, Internet, and Phone
Landlord Responsibilities	Full Service
Broker does not guarantee the information describing this property. Interested parties are advised to independently verify the information through personal inspectors or with appropriate professionals.	



**400 E. Broadway Ave** has a Walk Score of 89 out of 100. Very Walkable – Most errands can be accomplished on foot.

### \$13.00 psf - Full Service

- 3,385 sf / \$3,367 mo.
- 3% Annual Increase
- Full Service Lease
- Downtown Landmark Building
- Two Elevators
- Building Conference Room & Break Room
- Great Location and View Corner of N 4<sup>th</sup> St and Broadway Av
- Newly Renovated Exterior & Interior Lobby
- Large common break room in lower level
- Work-out room in lower Level
- Parking at city ramps maybe available (Tenant pays for parking)



**Taylor Daniel, Commercial REALTOR®**  
 701.391.4262  
[Taylor@DanielCompanies.com](mailto:Taylor@DanielCompanies.com)

**Bill Daniel, CCIM, Broker**  
 701.220.2455  
[Bill@DanielCompanies.com](mailto:Bill@DanielCompanies.com)

[DanielCompanies.com](http://DanielCompanies.com)



**Taylor Daniel, Commercial REALTOR®**  
701.391.4262  
[Taylor@DanielCompanies.com](mailto:Taylor@DanielCompanies.com)

**Bill Daniel, CCIM, Broker**  
701.220.2455  
[Bill@DanielCompanies.com](mailto:Bill@DanielCompanies.com)

[DanielCompanies.com](http://DanielCompanies.com)

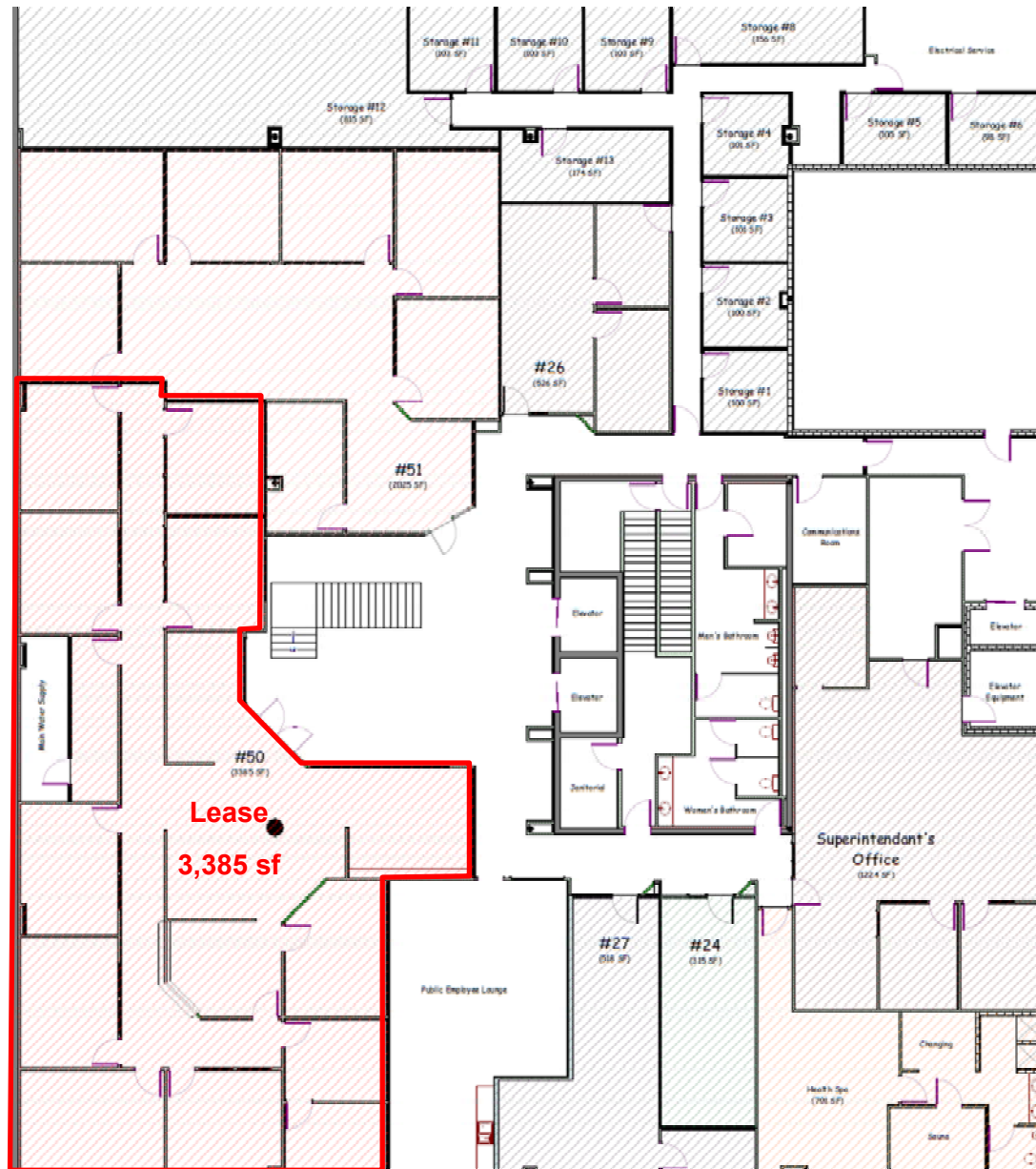


**Taylor Daniel, Commercial REALTOR®**  
701.391.4262  
[Taylor@DanielCompanies.com](mailto:Taylor@DanielCompanies.com)

**Bill Daniel, CCIM, Broker**  
701.220.2455  
[Bill@DanielCompanies.com](mailto:Bill@DanielCompanies.com)

[DanielCompanies.com](http://DanielCompanies.com)

# Floor Plan

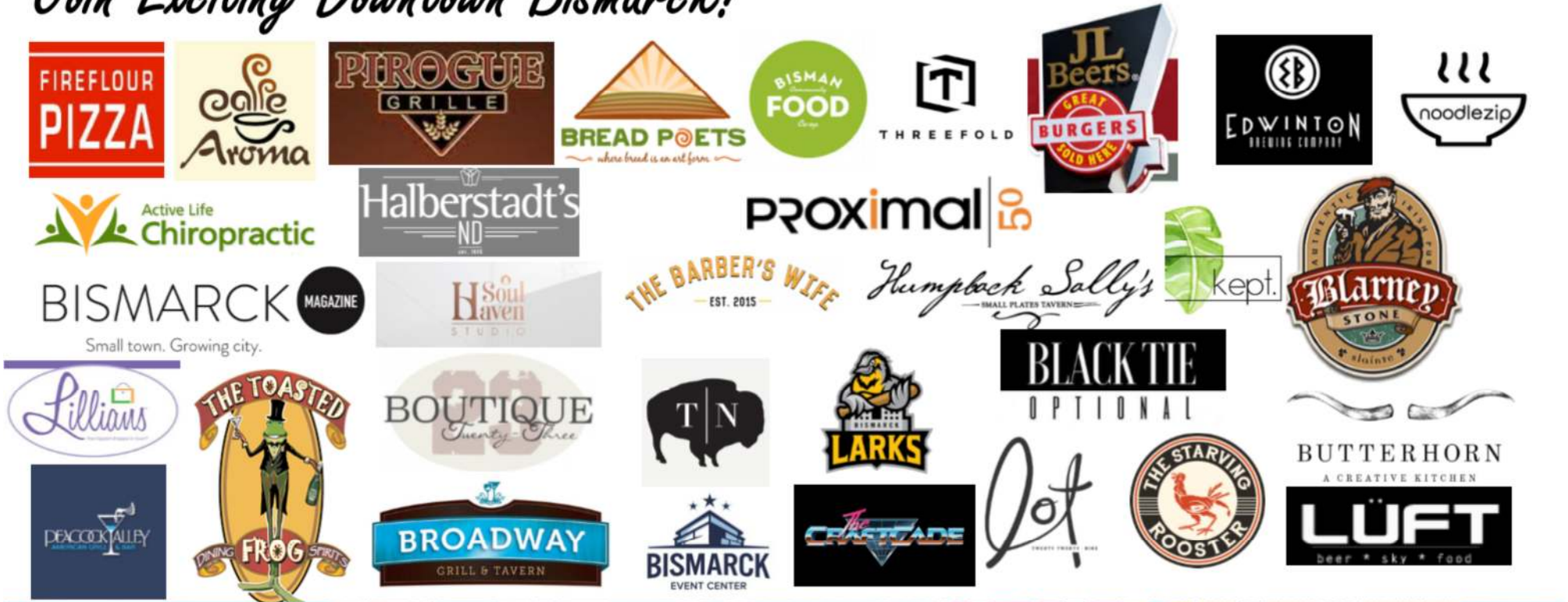


Taylor Daniel, Commercial REALTOR®  
701.391.4262  
[Taylor@DanielCompanies.com](mailto:Taylor@DanielCompanies.com)

Bill Daniel, CCIM, Broker  
701.220.2455  
[Bill@DanielCompanies.com](mailto:Bill@DanielCompanies.com)

[DanielCompanies.com](http://DanielCompanies.com)

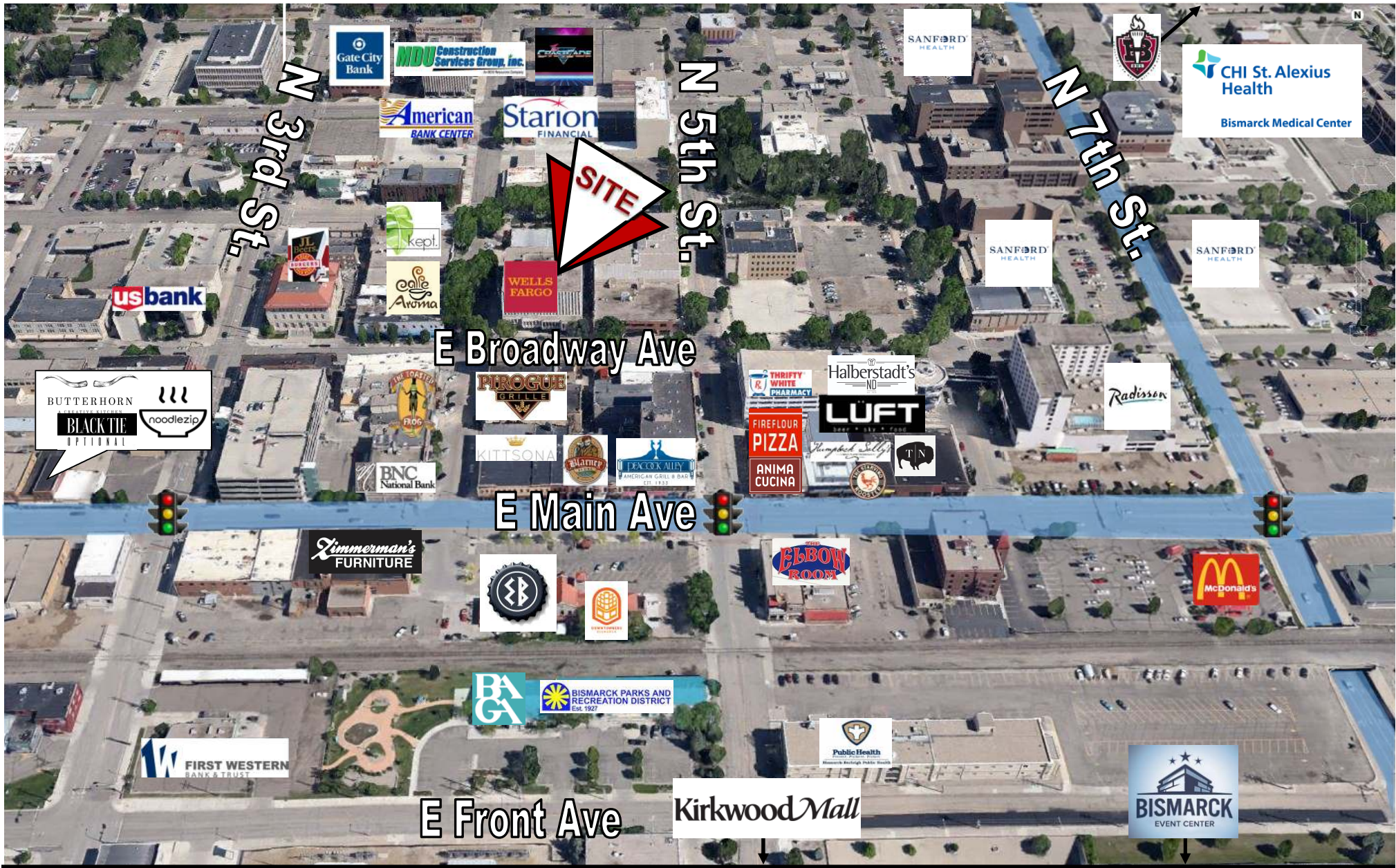
# Join Exciting Downtown Bismarck!



Taylor Daniel, Commercial REALTOR®  
 701.391.4262  
[Taylor@DanielCompanies.com](mailto:Taylor@DanielCompanies.com)

Bill Daniel, CCIM, Broker  
 701.220.2455  
[Bill@DanielCompanies.com](mailto:Bill@DanielCompanies.com)

[DanielCompanies.com](http://DanielCompanies.com)





# DANIEL COMPANIES

The Leader in Commercial Real Estate



**Bill Daniel**  
CCIM, Broker

701.220.2455  
Bill@DanielCompanies.com



**Kyle Holwagner**  
CCIM, SIOR

701.400.5373  
Kyle@DanielCompanies.com



**Taylor Daniel**  
Commercial REALTOR®

701.391.4262  
Taylor@DanielCompanies.com

Serving commercial real estate clients with unmatched market knowledge, experience and a well-deserved reputation for integrity. They know the Bismarck-Mandan commercial real estate market better than anyone.

Powerful Team. Powerful Process. Powerful Results.